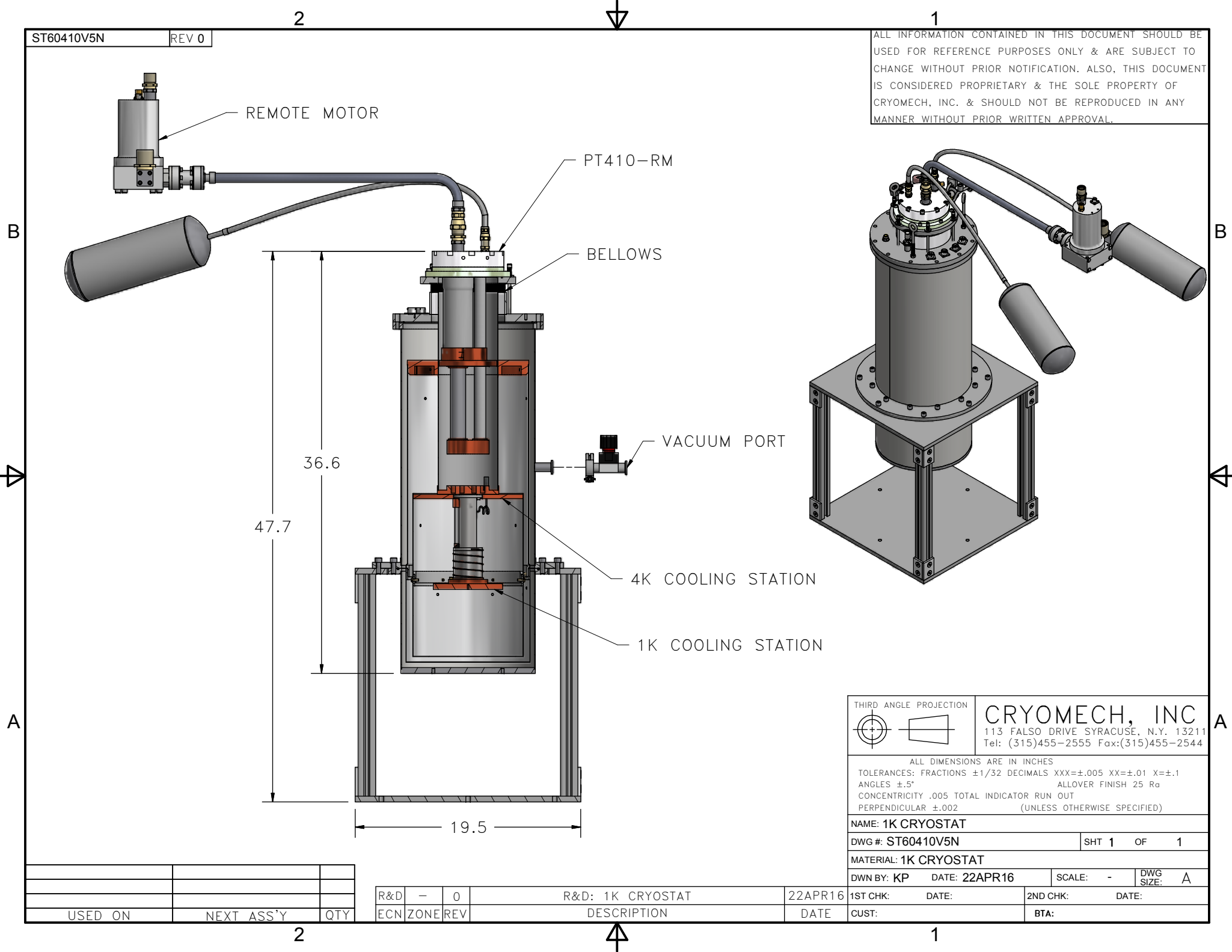


ST60410V5N REV 0

ALL INFORMATION CONTAINED IN THIS DOCUMENT SHOULD BE USED FOR REFERENCE PURPOSES ONLY & ARE SUBJECT TO CHANGE WITHOUT PRIOR NOTIFICATION. ALSO, THIS DOCUMENT IS CONSIDERED PROPRIETARY & THE SOLE PROPERTY OF CRYOMECH, INC. & SHOULD NOT BE REPRODUCED IN ANY MANNER WITHOUT PRIOR WRITTEN APPROVAL.



|  |               |  |             |
|--|---------------|--|-------------|
| THIRD ANGLE PROJECTION                                       |               | <b>CRYOMECH, INC</b>   |             |
|  |               | 113 FALSO DRIVE SYRACUSE, N.Y. 13211<br>Tel: (315)455-2555 Fax:(315)455-2544 |             |
| ALL DIMENSIONS ARE IN INCHES                                 |               |  |             |
| TOLERANCES: FRACTIONS ±1/32 DECIMALS XXX=±.005 XX=±.01 X=±.1 |               |  |             |
| ANGLES ±.5° ALLOVER FINISH 25 Ra                             |               |  |             |
| CONCENTRICITY .005 TOTAL INDICATOR RUN OUT                   |               |  |             |
| PERPENDICULAR ±.002 (UNLESS OTHERWISE SPECIFIED)             |               |  |             |
| <b>NAME: 1K CRYOSTAT</b>                                     |               |  |             |
| DWG #: ST60410V5N  |               | SHT 1 OF 1   |             |
| MATERIAL: 1K CRYOSTAT  |               |  |             |
| DWN BY: KP   | DATE: 22APR16 | SCALE: -   | DWG SIZE: A |
| 1ST CHK:   | DATE:         | 2ND CHK:   | DATE:       |
| CUST:  |               | BTA:   |             |

|     |      |     |                  |         |          |       |          |       |
|-----|------|-----|------------------|---------|----------|-------|----------|-------|
| R&D | -    | 0   | R&D: 1K CRYOSTAT | 22APR16 | 1ST CHK: | DATE: | 2ND CHK: | DATE: |
| ECN | ZONE | REV | DESCRIPTION      | DATE    | CUST:    |       | BTA:     |       |

|         |            |     |
|---------|------------|-----|
| USED ON | NEXT ASS'Y | QTY |
|         |            |     |

2

1

2

1