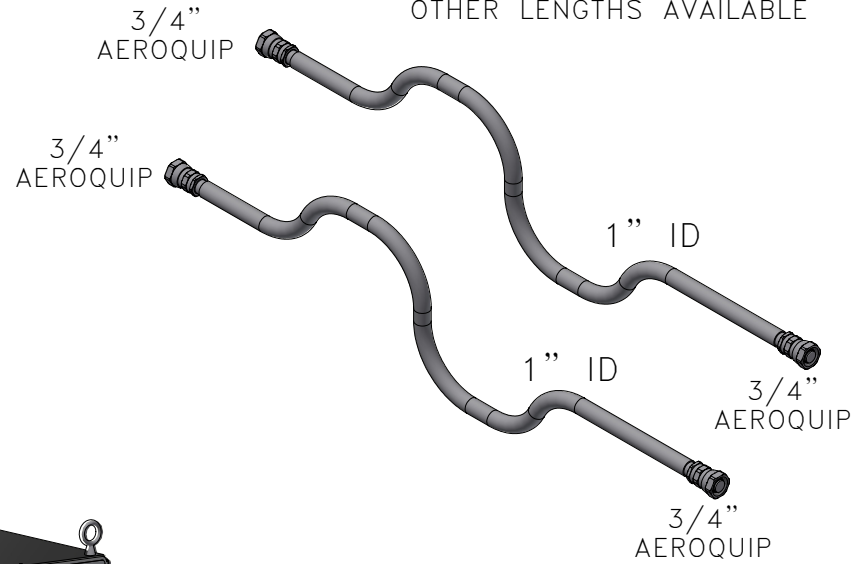


1
ALL INFORMATION CONTAINED IN THIS DOCUMENT SHOULD BE USED FOR REFERENCE PURPOSES ONLY & ARE SUBJECT TO CHANGE WITHOUT PRIOR NOTIFICATION. ALSO, THIS DOCUMENT IS CONSIDERED PROPRIETARY & THE SOLE PROPERTY OF CRYOMECH, INC. & SHOULD NOT BE REPRODUCED IN ANY MANNER WITHOUT PRIOR WRITTEN APPROVAL.

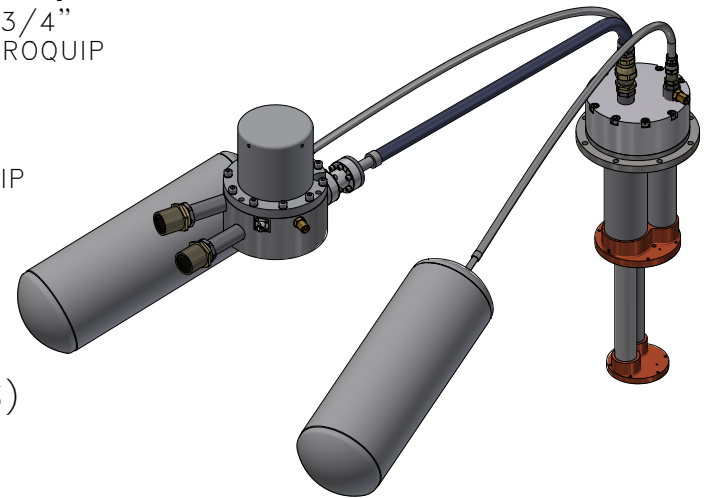
2
(2) LOW NOISE HELIUM FLEX LINES
STANDARD LENGTH: 66 ft
OTHER LENGTHS AVAILABLE



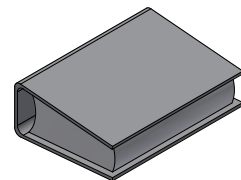
COLD HEAD MOTOR CORD
(SAME LENGTH AS FLEX LINES)

POWER CORD

CPA1114 COMPRESSOR PACKAGE
(WATER COOLED)



PT310-RM COLD HEAD



MANUAL



TOOL KIT



THIRD ANGLE PROJECTION

CRYOMECH, INC.
SYRACUSE, NY U.S.A. WWW.CRYOMECH.COM

UNLESS OTHERWISE SPECIFIED: ALL DIMENSIONS ARE IN INCHES
ALTERNATE UNITS IN "[]" ARE FOR REFERENCE ONLY
TOLERANCES: X & X 1/2 = ±1/6, X.XXX = ±.005, X.XX = ±.01
CIRCULAR RUNOUT .005 TIR, ANGULARITY .005, ALLOVER FINISH 25 Ra

NAME: PT310-RM CPA1114 CRYOCOOLER

DWG #: PT310-RM CPA1114 SYSTEM SHT 1 OF 1

MATERIAL: AS STATED

DWN BY: CJS DATE: 09MAR22 SCALE: 1:4 DWG SIZE: A

1ST CHK: - DATE: - 2ND CHK: - DATE: -
CUST: - BTA: -

ECN	ZONE	REV	DESCRIPTION	DATE